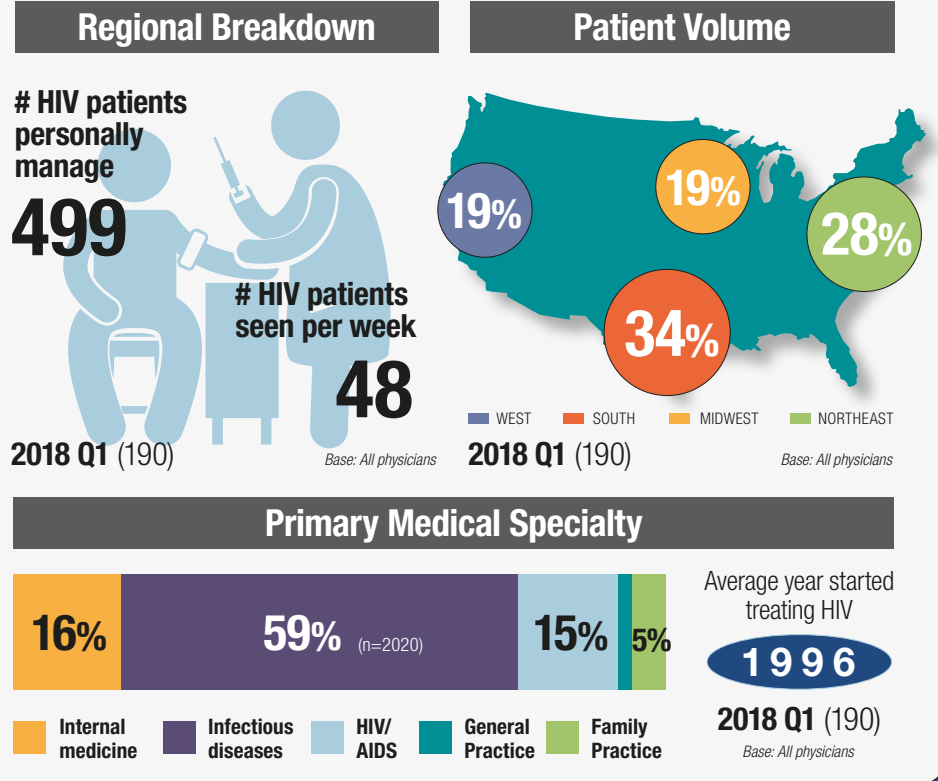
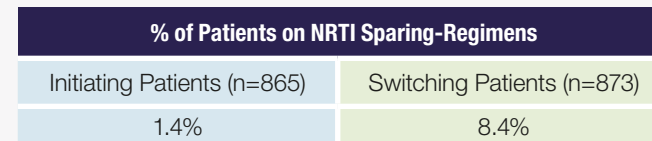
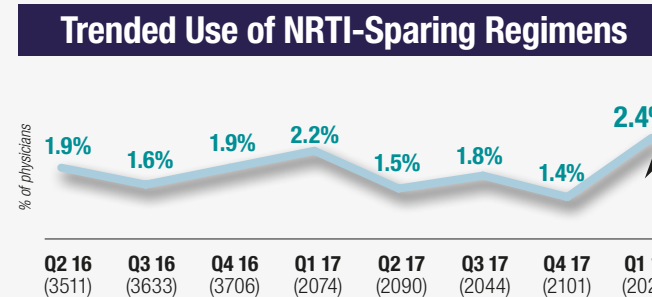
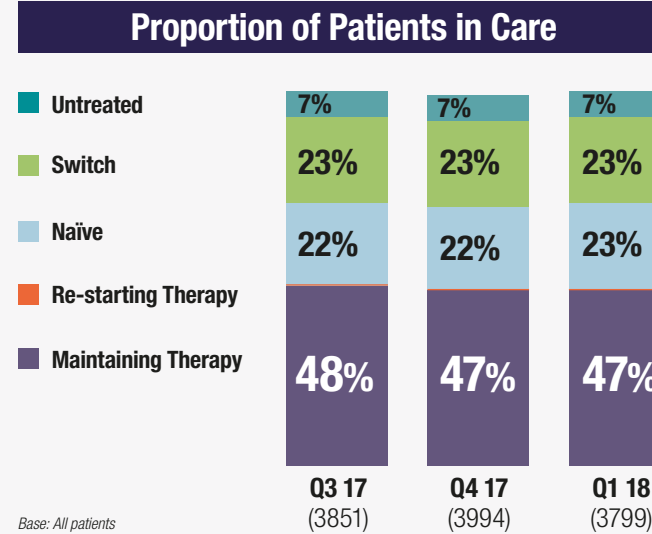


HIV THERAPY MONITOR & SCOPE PHYSICIAN REPORT

PHYSICIAN DEMOGRAPHICS



ARV THERAPY OVERVIEW



For more information please contact:

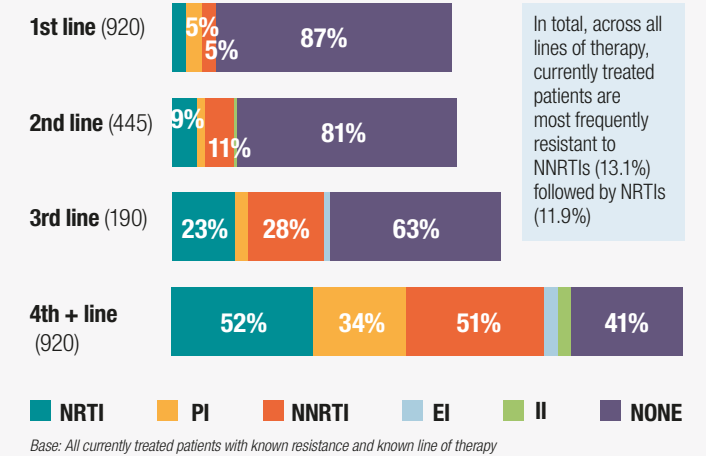
James.Deemer@ipsos.com

Julie.Spindel@ipsos.com

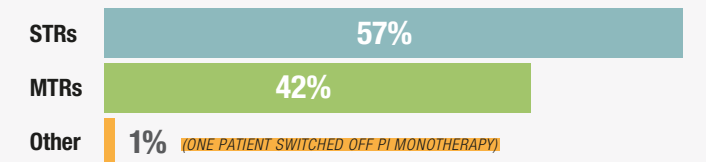
Denay.Rogers@ipsos.com

Ipsos HIV Therapy Monitor & Scope Combined Study, Q1 2018, data collected online from physicians in USA © Ipsos 2018

Class Resistance by Line of Therapy (n=1698)

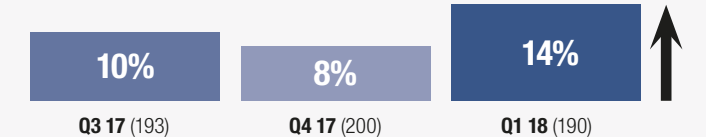


Type of Regimen Switched off of Due to Virological Failure (n=161)



Base: All switch patients with known previous regimen and reason for switch virological failure. Note: Switches off STR includes previous regimens of STRs only – not those paired with additional 3rd agents

Breadth of Physicians Prescribing 2DR



Base: All treated patients / All initiating and switch patients / All physicians. Breadth is # of prescribing physicians divided by # of total physicians. A significant change from previous quarter data at P<0.05 is annotated by ↑

PATIENT DEMOGRAPHICS

